

- Paper Review #2 Due Today
- Quiz #2 next Wednesday
- Geostatistics Lab 4 Due next Wednesday
- GIS UPDATE? Anyone?
- Discussion Leader Lance Drill: Gray Wolves and Climate Change
- Continue Lab 4

<http://www.cencoops.org/>

## New CeNCOOS Data Portal Beta Release

**CeNCOOS**  
Central & Northern California Ocean Observing System

Integrating marine observations to inform decision makers and the general public.

Home About Us News & Events Current Conditions Data Products Download Data Classroom Models

**CeNCOOS News & Events**

**New CeNCOOS Data Portal Beta Release**

The updated CeNCOOS data portal is now available online as a beta release. The new data portal adds a variety of data types and features. Release info. Go to Beta Portal.

**Environmental Data Products**

LA SURFACE CURRENTS ANIMATION OCEAN SATELLITE IMAGES ALL SHIP TRACKING MAP

**At a Glance**

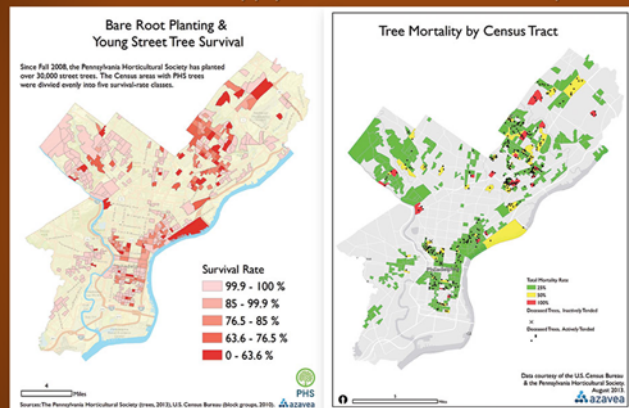
**Humboldt Bay**

Date: 02/24/2014  
Time: 18:50 (GMT)  
Water Temp: 50 °F, 10 °C  
Air Temp: 52 °F, 11 °C  
Wind Speed: 8 kt, 2 m/s  
Wind Dir: 100°  
Could not retrieve data from buoy.

**Partners Spotlight**

Liquid Robotics Inc.

## IS Students Invited to Apply to Azavea 'Summer of Maps' Fellowship Program



Julia produced a series of maps to determine:

- The tree mortality of bare root trees
- Factors that affect mortality by comparing communities with more active tree stewards to less active groups
- Projections of canopy cover over time given mortality and planting rates to inform where trees could be planted.

<http://www.summerofmaps.com/>

<http://azavea.com/news-azavea-summer-of-maps-fellowship-program>